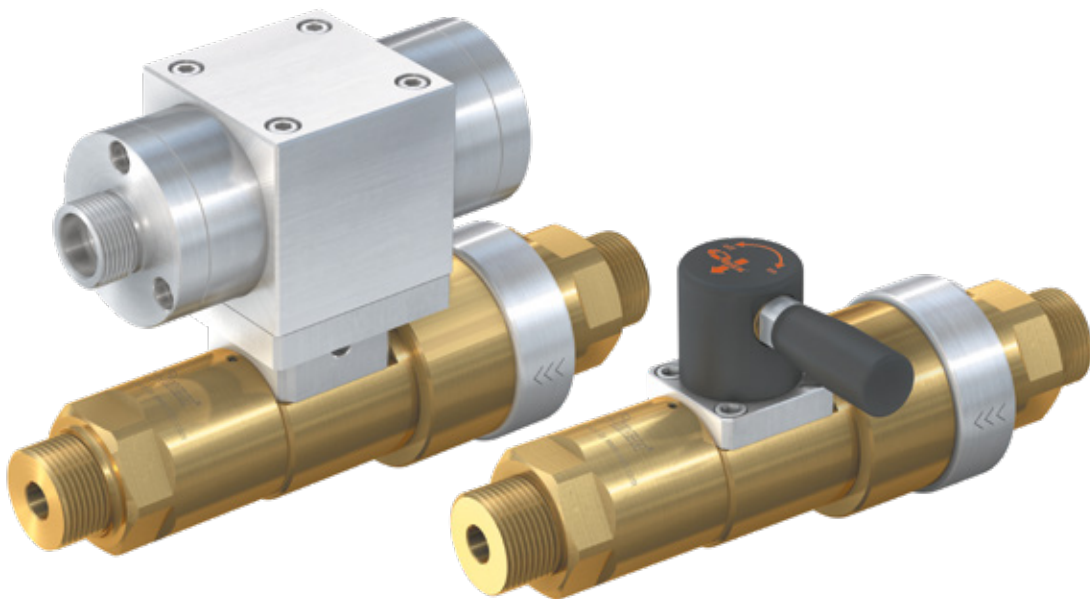


# Typ **TV17GE**

**WEH<sup>®</sup> Shut-off valve with automatic venting**

for inert gases up to 6,000 psi (420 bar)



## General

### DESCRIPTION



TV17GE with pneumatic actuation



TV17GE with manual actuation

The WEH® TV17GE High pressure valve is designed as a shut-off valve for pressurized gases. Additionally the outlet port of the valve is vented after closing.

The compact design makes the TV17GE ideal for installation into gas mixing plants. A check valve has to be mounted in the venting line to prevent ambient air from entering the valve outlet when venting.

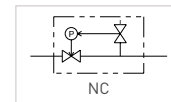
The valve is available with pneumatic actuator or manual lever.

### TECHNICAL DATA

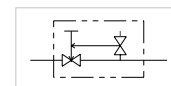
Characteristics	Basic version
<b>Functions</b>	
Automatic venting	Yes
Check valve	No
Vacuum operation	Yes
Flow direction	One-way (B1 → B2)
Actuation	Pneumatically for automatic control (e.g. via SPS) or manual with actuation lever
<b>Specifications of valve</b>	
Nominal bore DN	12 mm
Operating pressure PS	Max. 6,000 psi (420 bar)
Leak rate	$5 \times 10^{-3}$ mbar x l/s
Temperature range	-22 °F up to +140 °F
<b>Specifications of pneumatic actuator</b>	
Pilot pressure port P1	G1/4" internal thread
Venting port C1	G1/8" internal thread
Pilot pressure	116 - 145 psi (8 - 10 bar)
Measuring port M	M28x1.5 external thread
<b>Material</b>	
Parts (within media flow)	Brass and stainless steel 1.4305
Inlet valve seal	PEEK
O-rings / back-up rings	EPDM / PTFE / FKM
Springs	Steel 1.4310

#### Symbols

pneumatic:



manual:

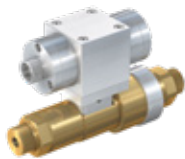
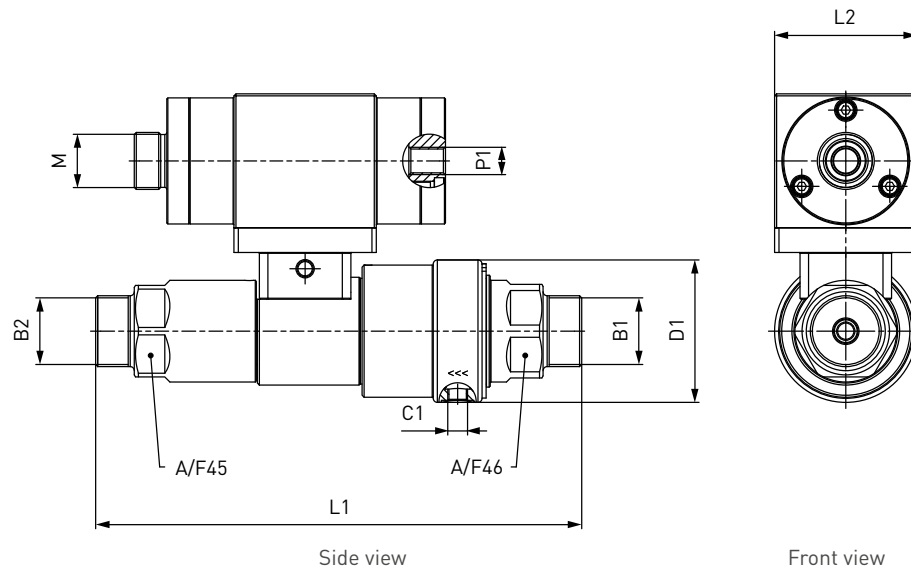


Other designs on request

## Ordering

### ORDERING | WEH® TV17GE Shut-off valve with pneumatic actuation

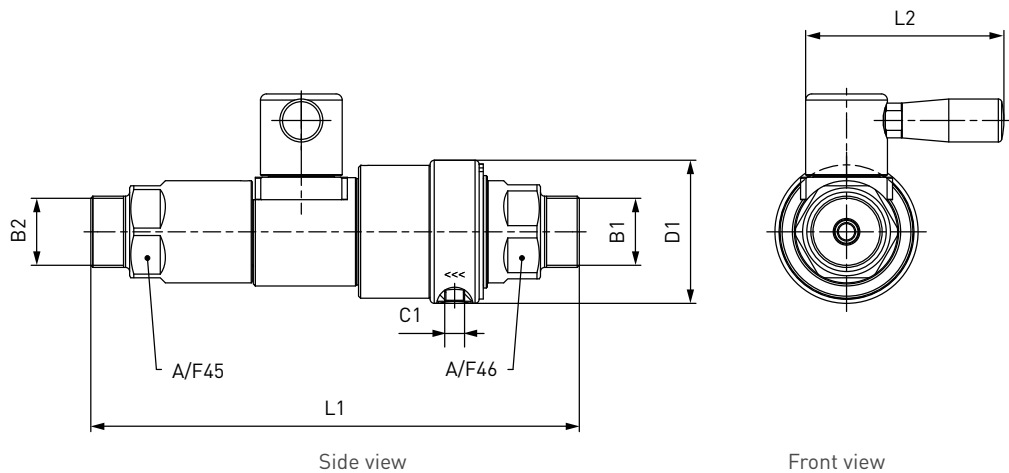
approx. dimensions (mm)



Part No.	DN	Normal position	B1 / B2 (external thread)	L1	L2	D1
<b>C1-117585-X01</b>	12	NC	UNF 1 3/8"-12	239	70	70

### ORDERING | WEH® TV17GE Shut-off valve with manual actuation

approx. dimensions (mm)



Part No.	DN	B1 / B2 (external thread)	L1	L2	D1
<b>C1-117589-X01</b>	12	UNF 1 3/8"-12	239	97	70

## Other products

### OTHER PRODUCTS

You will find more products in our current catalog no. 55

Further information on our homepage  
[www.weh.com](http://www.weh.com)



#### Illustrations

The illustrations and/or images used in this data sheet are particularly provided for illustrative purposes only and may differ in some details from the actual product. For binding information, please refer to your individual orders.

#### Abbreviations/Definition

Explanation of abbreviations see technical appendix in the catalogue or [www.weh.com](http://www.weh.com)

#### Safe product selection

Our WEH® Products are designed to be operated by qualified professional users (insofar as WEH® Products are also designed to be operated by other users in individual cases, this is explicitly stated in the corresponding operating instructions). You alone are responsible for the selection of WEH® Products and their configuration according to the requirements of your system. In doing so, please particularly consider your intended use, your performance data, your material compatibility, your system concept and your system limits as well as your technical and legal requirements for operation, handling and maintenance. The quality and safety of WEH® Products is our highest priority. For this reason, WEH® Products may not be used outside the specifications in the relevant data sheets and product descriptions. We also strongly recommend that you refrain from using third-party spare parts or a combination of WEH® Products with unsuitable third-party products. You alone are responsible for reviewing the suitability of third-party products. WEH® Products and WEH® Spare parts comply with our quality and safety standards.

#### Explanation on the Pressure Equipment Directive

These WEH® Products are generally and exclusively classified as pressure accessories for piping in accordance with Article 2 (5) of the Pressure Equipment Directive 2014/68/EU. These WEH® Products may not be used (i) as safety accessories or (ii) for vessels as defined by the Pressure Equipment Directive 2014/68/EU. Therefore, the application of these WEH® Products must comply with their classification as pressure accessories for piping. The assessment with regard to a different classification can, however, be made on request.

#### External change management

WEH reserves the right to update, optimise and adjust its products continuously. This may result in corresponding changes of the product. Customers will be informed proactively or unsolicited by WEH only in individual cases about product updates, product optimisations and/or product adaptations that have been carried out. You are free to contact WEH at any time to request information about any product updates, product optimisations and/or product adjustments.

© All rights reserved, WEH GmbH. Any unauthorized use is strictly forbidden. Subject to alteration.  
No liability will be assumed for any content. Herewith previous versions are no longer valid.

### » Contacting

For queries and further information, please do not hesitate to contact us.

#### Manufacturer:

##### **WEH GmbH Precision Connectors**

Josef-Henle-Str. 1  
89257 Illertissen / Germany

Phone: +49 7303 9609-0  
Fax: +49 7303 9609-9999

Email: [sales@weh.com](mailto:sales@weh.com)  
[www.weh.com](http://www.weh.com)



#### Distributor US:

##### **WEH Technologies Inc.**

24903 Laguna Edge Drive  
Katy, TX 77494 / USA

Phone: +1 832 331 0021  
Fax: +1 281 712 2664

Email: [sales@weh.us](mailto:sales@weh.us)  
[www.weh.us](http://www.weh.us)