

Type **TK6 CNG**

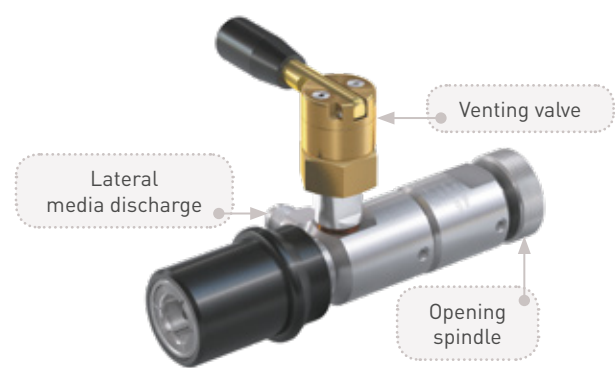
Service Nozzle

for discharging CNG fuel tanks of cars through the filling receptacle



General

DESCRIPTION



- Features**
- Discharge through the filling receptacle
 - Knurled spindle actuation
 - No additional locking device required
 - Plastic thermal protection
 - Only suitable for special WEH® TN1 CNG receptacles (without a filter)
 - Option: without venting valve

Cars running on natural gas have to be serviced and checked regularly, a process involving the discharge of their pressurized fuel tanks. The WEH® TK6 CNG service nozzle has been designed for this specific purpose. The service nozzle is simply engaged onto the receptacle of the car and the knurled spindle fully turned until the receptacle is fully open. Discharge can now take place through the lateral media discharge vent.

Application
Service nozzle for discharging of CNG fuel tanks of cars through the filling receptacle. Only to be used with special WEH® TN1 CNG receptacles without a filter. Please contact us!
Operation only by specially trained personnel. Not for self-service operation!

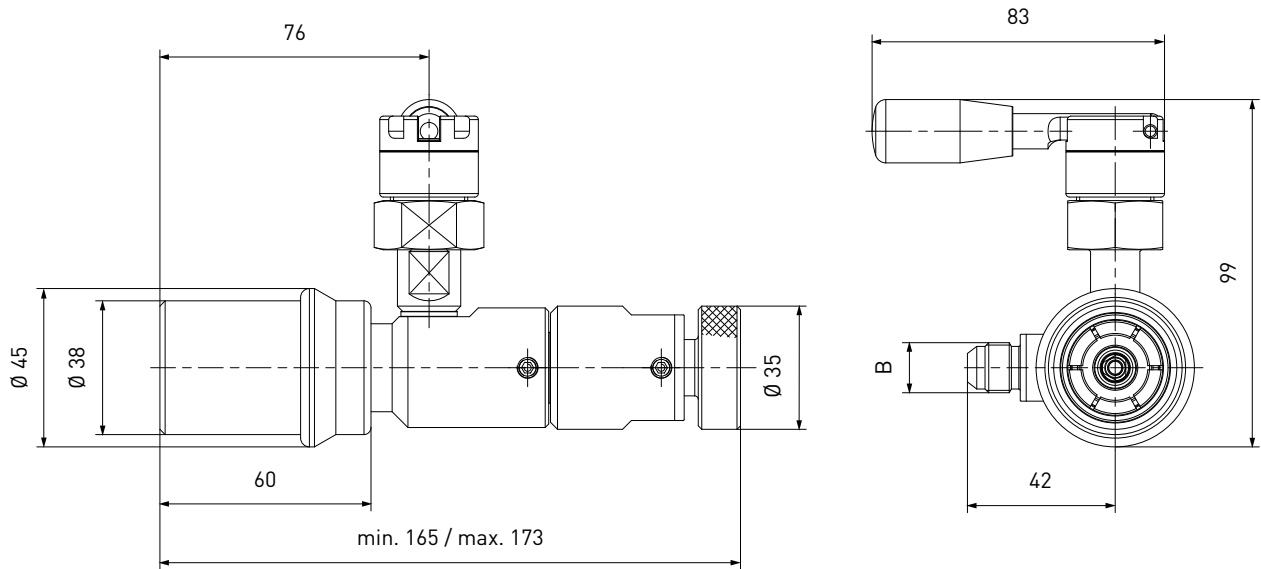
TECHNICAL DATA

Characteristic	Basic version	Options
Nominal bore DN	6 mm	On request
Pressure range	PN = 250 bar (3,600 psi) PS = 350 bar PT = 525 bar	
Temperature range	-40 °C up to +85 °C (-40 °F up to +185 °F)	On request
Material	Corrosion resistant	On request
Sealing material	Natural gas compatible	On request
Design	With plastic thermal protection, opening spindle and venting valve	Without venting valve
Weight	Approx. 1.2 kg (2.65 lbs.) with venting valve resp. 1 kg (2.20 lbs.) without venting valve	

Ordering

ORDERING | Service nozzle TK6 CNG with venting valve

approx. dimensions (mm)

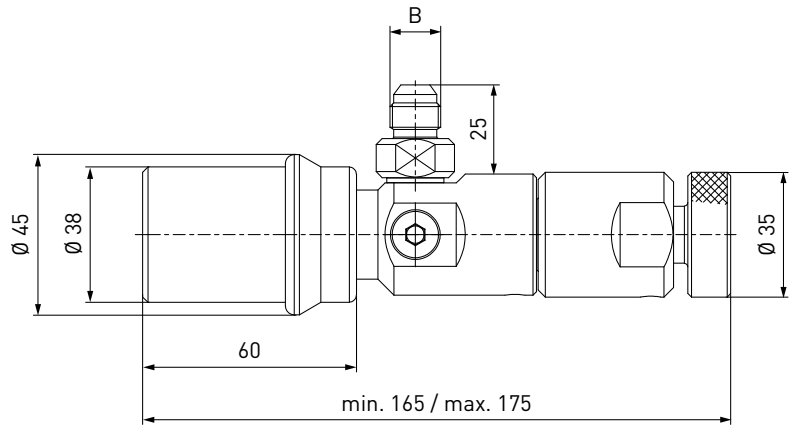


Part No.	Description	Pressure (PN)	Discharge B (external thread)
C1-111166-X01	TK6 CNG	250 bar / 3,600 psi	UNF 9/16"-18*

* acc. to SAE J514, 37°

ORDERING | Service nozzle TK6 CNG without venting valve

approx. dimensions (mm)



Part No.	Description	Pressure (PN)	Discharge B (external thread)
C1-105544-X01	TK6 CNG	250 bar / 3,600 psi	UNF 9/16"-18*

* acc. to SAE J514, 37°

Ordering

ACCESSORIES

The following accessories are available for type TK6 CNG:

Hoses

Hoses for connection to the service nozzle TK6 CNG, complete with fittings and press-fittings supported by coil spring stubs.



Part No.	Hose B1/B2 (internal thread)	Hose length
E68-1031-3000	UNF 9/16"-18*	3 m
E68-1031-4000	UNF 9/16"-18*	4 m
E68-1031-5000	UNF 9/16"-18*	5 m

* acc. to SAE J514, 37°

Spare parts

Various parts are available as spares for type TK6 CNG:

Part No.	Description
E99-44923	Maintenance spray

Other products

OTHER PRODUCTS

You will find more products in our current catalogue no. 15



Further information on our homepage
www.weh.com

Abbreviations/Definition

Explanation of abbreviations see technical appendix in the catalogue or www.weh.com

Safe product selection

Our WEH® Products are designed to be operated by qualified professional users (insofar as WEH® Products are also designed to be operated by other users in individual cases, this is explicitly stated in the corresponding operating instructions). You alone are responsible for the selection of WEH® Products and their configuration according to the requirements of your system. In doing so, please particularly consider your intended use, your performance data, your material compatibility, your system concept and your system limits as well as your technical and legal requirements for operation, handling and maintenance. The quality and safety of WEH® Products is our highest priority. For this reason, WEH® Products may not be used outside the specifications in the relevant Product data sheets and product descriptions. We also strongly recommend that you refrain from using third-party spare parts or a combination of WEH® Products with unsuitable third-party products. You alone are responsible for reviewing the suitability of third-party products. WEH® Products and WEH® Spare parts comply with our quality and safety standards.

Explanation on the Pressure Equipment Directive

These WEH® Products are generally and exclusively classified as pressure accessories for piping in accordance with Article 2 (5) of the Pressure Equipment Directive 2014/68/EU. These WEH® Products may not be used (i) as safety accessories or (ii) for vessels as defined by the Pressure Equipment Directive 2014/68/EU. Therefore, the application of these WEH® Products must comply with their classification as pressure accessories for piping. The assessment with regard to a different classification can, however, be made on request.

External change management

WEH reserves the right to update, optimise and adjust its products continuously. This may result in corresponding changes of the product. Customers will be informed proactively or unsolicited by WEH only in individual cases about product updates, product optimisations and/or product adaptations that have been carried out. You are free to contact WEH at any time to request information about any product updates, product optimisations and/or product adjustments.

© All rights reserved, WEH GmbH. Any unauthorized use is strictly forbidden. Subject to alteration.
No liability will be assumed for any content. Herewith previous versions are no longer valid.

» Contacting

For queries and further information, please do not hesitate to contact us.

Manufacturer:

WEH GmbH Gas Technology

Josef-Henle-Str. 1
89257 Illertissen / Germany

Phone: +49 7303 95190-0

Fax: +49 7303 95190-9999

Email: h2sales@weh.com

www.weh.com