

# Type **TK6 H<sub>2</sub>**

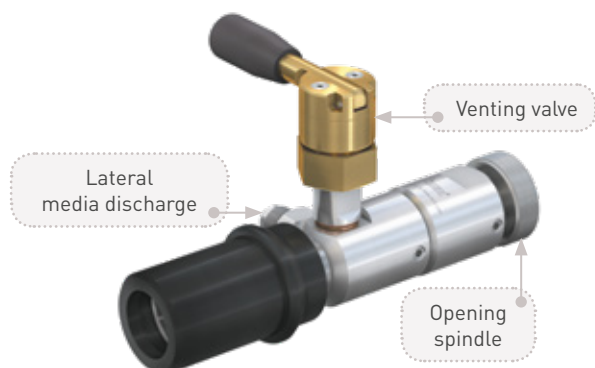
## WEH<sup>®</sup> Service Nozzle

for discharging of H<sub>2</sub> fuel tanks of light-duty vehicles (cars) through the filling receptacle



## General

### DESCRIPTION



#### Features

- Discharge through the filling receptacle
- Knurled spindle actuation
- No additional locking device required
- Version with and without venting valve
- Plastic thermal protection
- Only suitable for WEH® TN1 H<sub>2</sub> Receptacles (without a filter)

Cars running on hydrogen have to be serviced and checked regularly, a process involving the discharge of their pressurized fuel tanks. The WEH® TK6 H<sub>2</sub> Service Nozzle has been designed for this specific purpose.

The service nozzle is simply engaged onto the WEH® TN1 H<sub>2</sub> Receptacle of the car and the knurled spindle fully turned until the receptacle is fully open. Discharge can now take place through the lateral media discharge vent.

#### Application

Service nozzle for discharging of H<sub>2</sub> fuel tanks of light-duty vehicles (cars) through the filling receptacle. Only to be used with WEH® TN1 H<sub>2</sub> Receptacles without a filter. Operation only by specially trained personnel. Not for self-service operation!

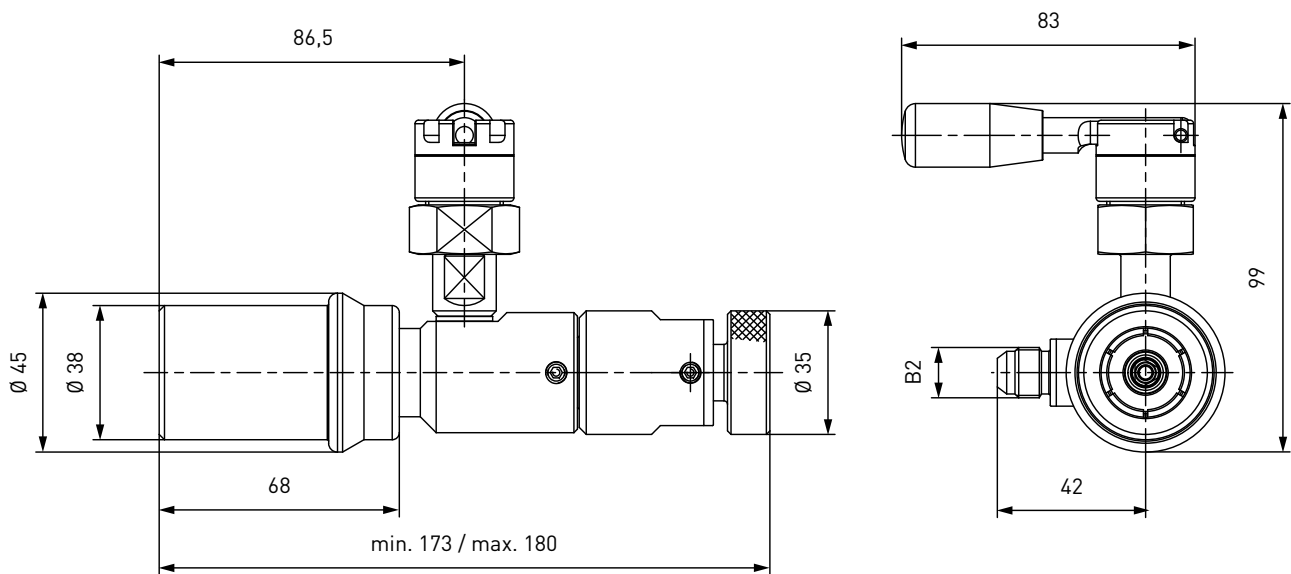
### TECHNICAL DATA

Characteristic	Basic version	Options
Nominal bore DN	6 mm	On request
Pressure range	PN = 350 bar (5,000 psi)   PS = 450 bar   PT = 675 bar	
Temperature range	-40 °F up to +185 °F	On request
Material	Corrosion resistant	On request
Sealing material	Hydrogen compatible	On request
Design	With plastic thermal protection, opening spindle and with resp. without venting valve	On request
Weight	Approx. 2.65 lbs. with venting valve resp. approx. 2.21 lbs. without venting valve	

Ordering

ORDERING | WEH® TK6 H<sub>2</sub> Service Nozzle with venting valve

approx. dimensions (mm)

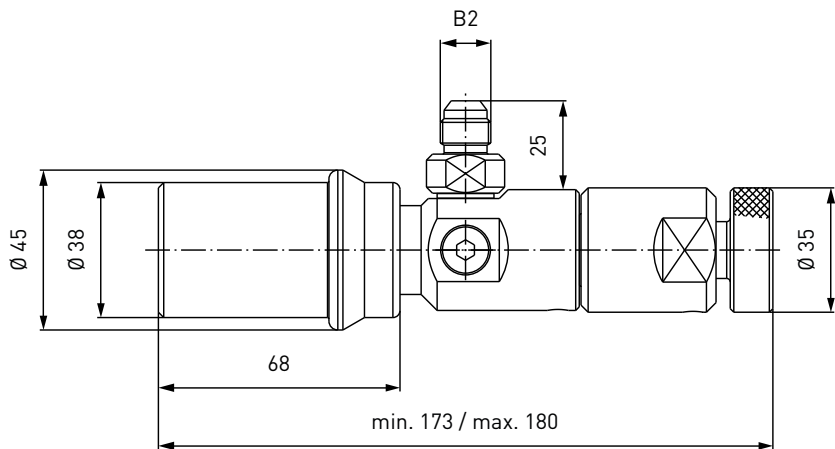


Part No.	Description	Pressure (PN)	Discharge B2 (male thread)
C1-104732-X01	TK6 H <sub>2</sub>	350 bar / 5,000 psi	UNF 9/16"-18*

\* acc. to SAE J514, 37°

ORDERING | WEH® TK6 H<sub>2</sub> Service Nozzle without venting valve

approx. dimensions (mm)



Part No.	Description	Pressure (PN)	Discharge B2 (male thread)
C1-114907-X01	TK6 H <sub>2</sub>	350 bar / 5,000 psi	UNF 9/16"-18*

\* acc. to SAE J514, 37°

Accessories

ACCESSORIES

The following accessories are available for the WEH® TK6 H<sub>2</sub> Service Nozzle:

Hoses

Hoses for connection to the TK6 H<sub>2</sub> service nozzle, complete with fittings and press-fittings supported by coil spring stubs.



Part No.	Hose B1/B2 (female thread)	Hose length
E68-60809	UNF 9/16"-18*	3 m
E68-60812	UNF 9/16"-18*	4 m
E68-60813	UNF 9/16"-18*	5 m

\* acc. to SAE J514, 37°

## Other products

### OTHER PRODUCTS

You will find more products in our current catalog no. 50



Further information on our homepage  
[www.weh.com](http://www.weh.com)

#### Abbreviations/Definition

Explanation of abbreviations see technical appendix in the catalogue or [www.weh.com](http://www.weh.com)

#### Safe product selection

Our WEH® Products are designed to be operated by qualified professional users (insofar as WEH® Products are also designed to be operated by other users in individual cases, this is explicitly stated in the corresponding operating instructions). You alone are responsible for the selection of WEH® Products and their configuration according to the requirements of your system. In doing so, please particularly consider your intended use, your performance data, your material compatibility, your system concept and your system limits as well as your technical and legal requirements for operation, handling and maintenance. The quality and safety of WEH® Products is our highest priority. For this reason, WEH® Products may not be used outside the specifications in the relevant data sheets and product descriptions. We also strongly recommend that you refrain from using third-party spare parts or a combination of WEH® Products with unsuitable third-party products. You alone are responsible for reviewing the suitability of third-party products. WEH® Products and WEH® Spare parts comply with our quality and safety standards.

#### Explanation on the Pressure Equipment Directive

These WEH® Products are generally and exclusively classified as pressure accessories for piping in accordance with Article 2 (5) of the Pressure Equipment Directive 2014/68/EU. These WEH® Products may not be used (i) as safety accessories or (ii) for vessels as defined by the Pressure Equipment Directive 2014/68/EU. Therefore, the application of these WEH® Products must comply with their classification as pressure accessories for piping. The assessment with regard to a different classification can, however, be made on request.

#### External change management

WEH reserves the right to update, optimise and adjust its products continuously. This may result in corresponding changes of the product. Customers will be informed proactively or unsolicited by WEH only in individual cases about product updates, product optimisations and/or product adaptations that have been carried out. You are free to contact WEH at any time to request information about any product updates, product optimisations and/or product adjustments.

© All rights reserved, WEH GmbH. Any unauthorized use is strictly forbidden. Subject to alteration.  
No liability will be assumed for any content. Herewith previous versions are no longer valid.

### » Contacting

For queries and further information, please do not hesitate to contact us.

#### Manufacturer:

**WEH GmbH Gas Technology**

Josef-Henle-Str. 1  
89257 Illertissen / Germany

Phone: +49 7303 95190-0  
Fax: +49 7303 95190-9999

Email: [h2sales@weh.com](mailto:h2sales@weh.com)  
[www.weh.com](http://www.weh.com)

#### Distributor US:

**WEH Technologies Inc.**

24903 Laguna Edge Drive  
Katy, TX 77494 / USA

Phone: +1 832 331 0021  
Fax: +1 281 712 2664

Email: [sales@weh.us](mailto:sales@weh.us)  
[www.weh.us](http://www.weh.us)

