

# Type **TK4 CNG**

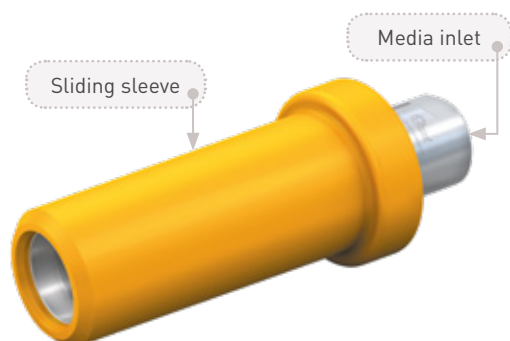
## CNG Fueling Nozzle

for cars



## General

### DESCRIPTION



#### Features

- Compatible with receptacles acc. to NGV1 standard and ISO 14469-1 and 3
- Push-Pull actuation
- Integrated shut-off valve
- Plastic thermal protection
- WEH® Jaw locking mechanism
- Colour coded sliding sleeve (3,000 psi black, 3,600 psi yellow)
- High-grade materials
- Compact design

The TK4 CNG fueling nozzle is designed specifically for fast filling of vehicles having an NGV1 receptacle at fueling stations with NGV1 standard and is best suited for this application.

The TK4 CNG is now even easier to operate. The clamping jaws are opened when the nozzle is disconnected and the sliding sleeve need not be pulled back to connect the nozzle. Just push the nozzle straight onto the receptacle and the TK4 CNG jaws clamp tightly. Once the fueling nozzle is connected, the shut-off valve in the nozzle opens and the pressure-tight connection is established. The extended construction of the fueling nozzle allows easy refueling of difficult-to-access receptacles.

#### Application

Fueling nozzle for CNG fast filling of cars to be used with WEH® TN1 CNG receptacles acc. to NGV1 standard and ISO 14469-1 and 3.

Operation only by specially trained service personnel. Not for self-service operation!

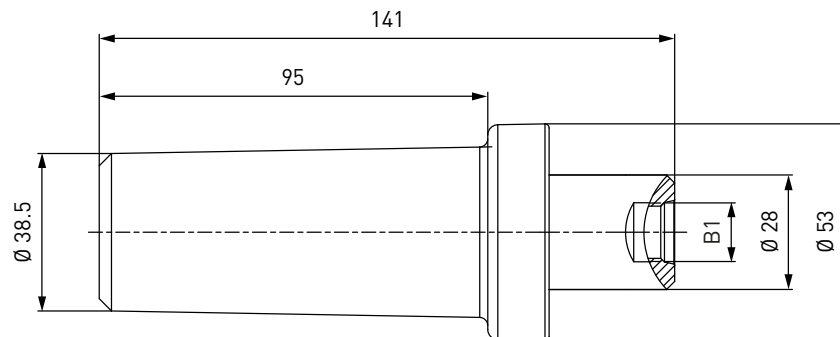
### TECHNICAL DATA

Characteristic	Basic version	Options
Nominal bore DN	Depending on design	On request
Pressure range	B200 acc. to ISO 14469-1 (P30 acc. to ANSI NGV1) PN = 200 bar (3,000 psi)   PS = 300 bar   PT = 450 bar (black) B250 acc. to ISO 14469-3 (P36 acc. to ANSI NGV1) PN = 250 bar (3,600 psi)   PS = 350 bar   PT = 525 bar (yellow)	
Temperature range	-40 °F up to +185 °F	On request
Material	Corrosion resistant	On request
Sealing material	Natural gas compatible	On request
Design	With plastic thermal protection	On request
Weight	Approx. 0.88 lbs.	
Registration	The products comply with ANSI NGV1	

## Ordering / Accessories

### ORDERING | Fueling nozzle TK4 CNG

approx. dimensions (mm)



Part No.	Description	DN	Pressure (PN)	Inlet B1 (female thread)
<b>C1-112765-X01</b>	TK4 CNG	8	3,000 psi (black)	UNF 9/16" - 18*
<b>C1-112764-X01</b>	TK4 CNG	8	3,600 psi (yellow)	UNF 9/16" - 18*
<b>C1-125996-X01</b>	TK4 CNG	8	3,000 psi (black)	UNF 9/16" - 18* LH
<b>C1-125997-X01</b>	TK4 CNG	8	3,000 psi (black)	G3/8"

\* acc. to SAE J1926

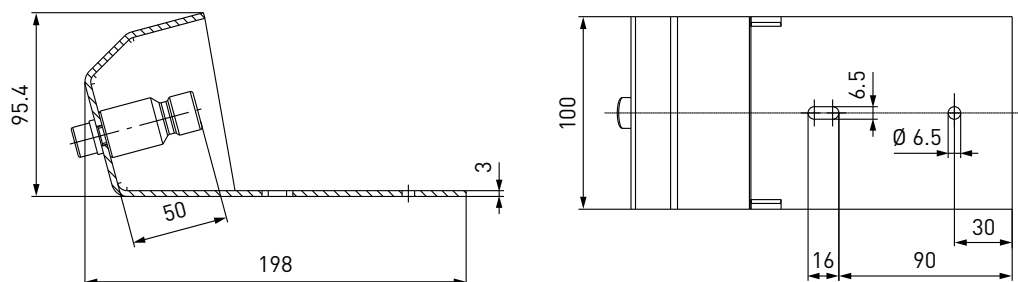
On request inlet port 'B1' is also available with other thread sizes.

### ACCESSORIES

The following accessories are available for type TK4 CNG:

#### Dispenser mounting

Mounting for safe attachment of the fueling nozzle to the dispenser. Design: Stainless steel



Part No.	Description
<b>C1-100205</b>	Mounting (not switch actuated)

## Accessories

### Filter TSF1 CNG (40 micron)

We recommend the installation of a type TSF1 CNG filter (see page 90, catalog no. 15) between the nozzle and the filling hose. The filter protects your system from damage due to dirt ingress.



Part No.	Description	DN	Pressure (PN)	Inlet B1	Outlet B2
<b>C1-94070-X01</b>	TSF1 CNG	8	3,600 psi	UNF 9/16"-18* female thread	UNF 9/16"-18* male thread
<b>C1-106854-X01</b>	TSF1 CNG	8	3,600 psi	UNF 9/16"-18** male thread	UNF 9/16"-18* male thread

\* acc. to SAE J1926

\*\* acc. to SAE J514, 37°

### Filling hoses

Filling hoses for connecting fueling nozzle and dispenser, complete with fittings and press-fittings supported by coil spring stubs.



Part No.	Filling hose B1/B2 (female thread)	Hose length
<b>E68-1031-3000</b>	UNF 9/16"-18*	3 m
<b>E68-1031-4000</b>	UNF 9/16"-18*	4 m
<b>E68-1031-5000</b>	UNF 9/16"-18*	5 m

\* acc. to SAE J514, 37°

### Fittings

Stainless steel fittings for connecting the media inlet 'B1' to the filling hose.

Part No.	Description	Connection fueling nozzle	Connection filling hose
<b>W6702</b>	Fitting	UNF 9/16"-18** male thread	UNF 9/16"-18* male thread
<b>W6705</b>	Fitting	UNF 9/16"-18** male thread	UNF 7/16"-20* male thread
<b>W6927</b>	Fitting	UNF 9/16"-18** male thread	UNF 7/8"-14* male thread
<b>E80-561P</b>	Fitting	UNF 9/16"-18** male thread	NPT 1/4" male thread
<b>C1-59695</b>	Fitting	UNF 9/16"-18** male thread LH	UNF 9/16"-18** male thread

\* acc. to SAE J514, 37°

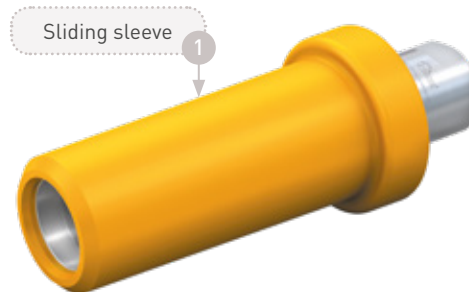
\*\* acc. to SAE J1926

Please see page 126 in catalog no. 15 onwards for a detailed overview on all available fittings.

## Accessories

### Spare parts

Various parts are available as spares for type TK4 CNG:



Part No.	Description
<b>C1-132266</b>	1 Spare parts set 3,000 psi (black sliding sleeve incl. disk and 3 screws)
<b>C1-132267</b>	1 Spare parts set 3,600 psi (yellow sliding sleeve incl. disk and 3 screws)
<b>E99-44923</b>	Maintenance spray

## Other products

### OTHER PRODUCTS

You will find more products in our current catalog no. 15



Further information on our homepage  
[www.weh.com](http://www.weh.com)

#### Abbreviations/Definition

Explanation of abbreviations see technical appendix in the catalogue or [www.weh.com](http://www.weh.com)

#### Safe product selection

Our WEH® Products are designed to be operated by qualified professional users (insofar as WEH® Products are also designed to be operated by other users in individual cases, this is explicitly stated in the corresponding operating instructions). You alone are responsible for the selection of WEH® Products and their configuration according to the requirements of your system. In doing so, please particularly consider your intended use, your performance data, your material compatibility, your system concept and your system limits as well as your technical and legal requirements for operation, handling and maintenance. The quality and safety of WEH® Products is our highest priority. For this reason, WEH® Products may not be used outside the specifications in the relevant data sheets and product descriptions. We also strongly recommend that you refrain from using third-party spare parts or a combination of WEH® Products with unsuitable third-party products. You alone are responsible for reviewing the suitability of third-party products. WEH® Products and WEH® Spare parts comply with our quality and safety standards.

#### Explanation on the Pressure Equipment Directive

These WEH® Products are generally and exclusively classified as pressure accessories for piping in accordance with Article 2 (5) of the Pressure Equipment Directive 2014/68/EU. These WEH® Products may not be used (i) as safety accessories or (ii) for vessels as defined by the Pressure Equipment Directive 2014/68/EU. Therefore, the application of these WEH® Products must comply with their classification as pressure accessories for piping. The assessment with regard to a different classification can, however, be made on request.

#### External change management

WEH reserves the right to update, optimise and adjust its products continuously. This may result in corresponding changes of the product. Customers will be informed proactively or unsolicited by WEH only in individual cases about product updates, product optimisations and/or product adaptations that have been carried out. You are free to contact WEH at any time to request information about any product updates, product optimisations and/or product adjustments.

© All rights reserved, WEH GmbH. Any unauthorized use is strictly forbidden. Subject to alteration.  
 No liability will be assumed for any content. Herewith previous versions are no longer valid.

## » Contact

For queries and further information, please do not hesitate to contact us.

#### Manufacturer:

##### **WEH GmbH Gas Technology**

Josef-Henle-Str. 1  
 89257 Illertissen / Germany

Phone: +49 7303 95190-0

Fax: +49 7303 95190-9999

Email: [ngvsales@weh.com](mailto:ngvsales@weh.com)

[www.weh.com](http://www.weh.com)



#### Distributor US:

##### **WEH Technologies Inc.**

24903 Laguna Edge Drive  
 Katy, TX 77494 / USA

Phone: +1 832 331 0021

Fax: +1 281 712 2664

Email: [sales@weh.us](mailto:sales@weh.us)

[www.weh.us](http://www.weh.us)