

Type **TK10 CNG**

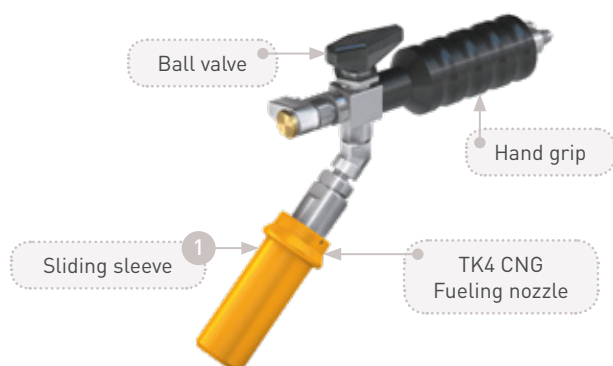
CNG Fueling Nozzle

for cars



General

DESCRIPTION



Features

- Compatible with receptacles acc. to NGV1 standard and ISO 14469-1 and 3
- Push-to-connect
- Integrated shut-off valve
- Plastic thermal protection
- Grip position available at 45° or 90°
- Ergonomic design
- WEH® Jaw locking mechanism
- Colour coded sliding sleeve (3,000 psi black, 3,600 psi yellow)
- High-grade materials
- Option: without gas recirculation

The TK10 CNG fueling nozzle combines user comfort with maximum convenience. The integrated TK4 CNG fueling nozzle features 'push-to-connect' jaw locking system which automatically moves the sliding sleeve back when making a connection. The ergonomic design of the hand grip enables an easy connection to the receptacle. The hand grip is slightly angled to prevent stresses on the high pressure hose and hose damage due to chafing on the ground. Refueling starts after opening the ball valve. Closing the ball valve finishes refueling and the integrated gas recirculation automatically depressurizes the system. The nozzle can then be disconnected by pulling back the sliding sleeve of the TK4 CNG.

On request the type TK10 CNG fueling nozzle is also available without gas recirculation. The grip position can either be 45° or 90°. The extended construction of the integrated TK4 CNG fueling nozzle helps in refueling difficult-to-access receptacles. WEH® Jaws grip symmetrically, avoiding damage to the receptacle profile which could result in leakage. To achieve optimum performance it is recommended that the TK10 CNG fueling nozzle is used with the WEH® TN1 CNG receptacle.

Application

Fueling nozzle for CNG fast filling of cars to be used with WEH® TN1 CNG receptacles acc. to NGV1 standard and ISO 14469-1 and 3. Operation only by specially trained service personnel. Not for self-service operation!

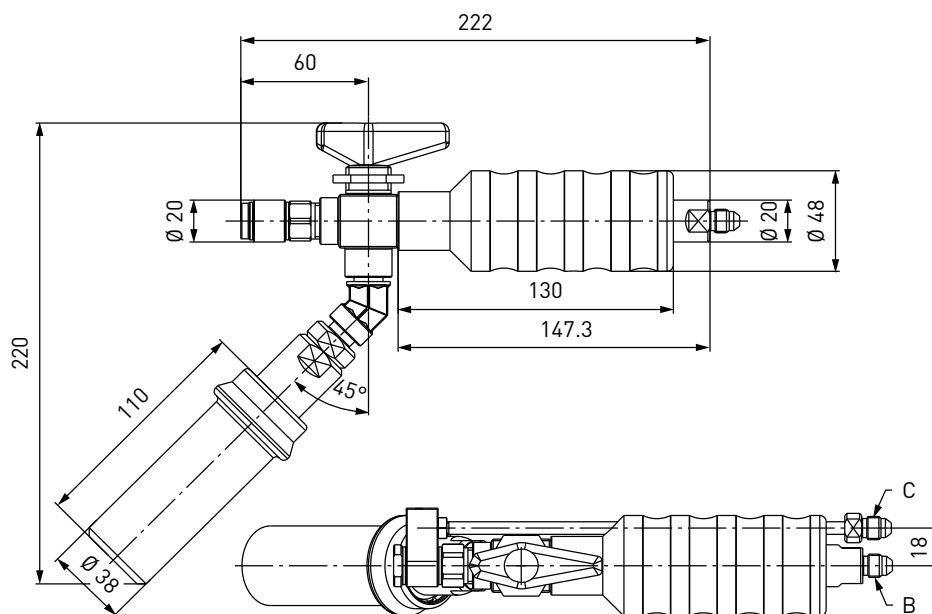
TECHNICAL DATA

Characteristic	Basic version	Options
Nominal bore DN	4 mm	On request
Pressure range	B200 acc. to ISO 14469-1 (P30 acc. to ANSI NGV1) PN = 200 bar (3,000 psi) PS = 300 bar PT = 450 bar (black) B250 acc. to ISO 14469-3 (P36 acc. to ANSI NGV1) PN = 250 bar (3,600 psi) PS = 350 bar PT = 525 bar (yellow)	
Temperature range	-40 °F up to +185 °F	On request
Material	Corrosion resistant	On request
Sealing material	Natural gas compatible	On request
Design	With plastic thermal protection, grip position 45° and gas recirculation	Grip position 45° without gas recirculation Grip position 90° without gas recirculation Grip position 90° with gas recirculation
Weight	Approx. 2.87 lbs.	
Registration	The products comply with ANSI NGV1 (TK4 CNG)	

Ordering

ORDERING | Fueling nozzle TK10 CNG with grip position 45°

approx. dimensions (mm)



Part No.	Description	Pressure [PN]	Inlet B (male thread)	Gas recirculation C (male thread)
C1-15973	TK10 CNG with gas recirculation	3,000 psi (black)	UNF 7/16"-20*	UNF 7/16"-20*
C1-88401	TK10 CNG with gas recirculation	3,600 psi (yellow)	UNF 7/16"-20*	UNF 7/16"-20*
C1-15971	TK10 CNG without gas recirculation	3,000 psi (black)	UNF 7/16"-20*	-
C1-106697	TK10 CNG without gas recirculation	3,600 psi (yellow)	UNF 7/16"-20*	-

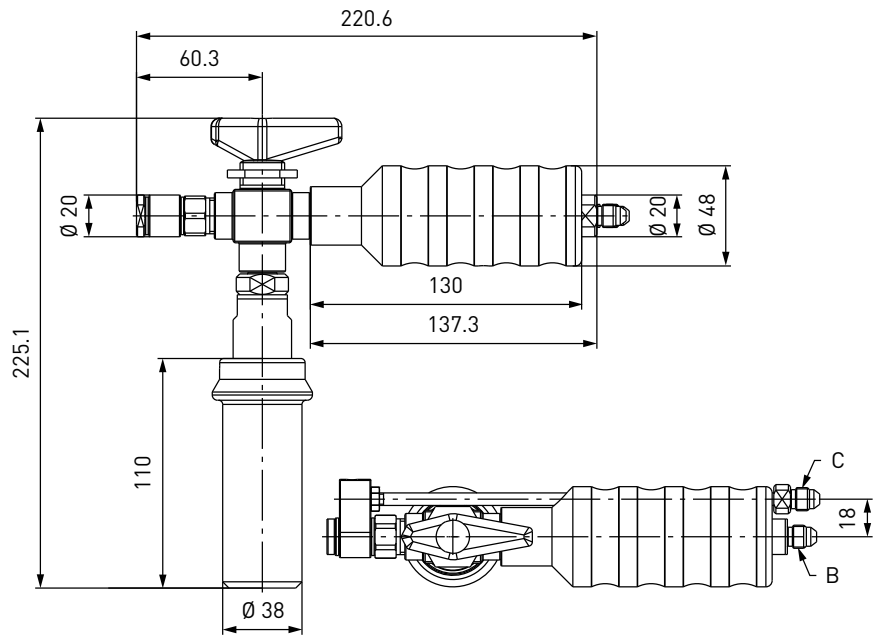
* acc. to SAE J514, 37°

On request inlet port 'B' is also available with other thread sizes.

Ordering

ORDERING | Fueling nozzle TK10 CNG with grip position 90°

approx. dimensions (mm)



Part No.	Description	Pressure (PN)	Inlet B (male thread)	Gas recirculation C (male thread)
C1-15974	TK10 CNG with gas recirculation	3,000 psi (black)	UNF 7/16"-20*	UNF 7/16"-20*
C1-101090	TK10 CNG with gas recirculation	3,600 psi (yellow)	UNF 7/16"-20*	UNF 7/16"-20*
C1-15972	TK10 CNG without gas recirculation	3,000 psi (black)	UNF 7/16"-20*	-
C1-106007	TK10 CNG without gas recirculation	3,600 psi (yellow)	UNF 7/16"-20*	-

* acc. to SAE J514, 37°
On request inlet port 'B' is also available with other thread sizes.

Please see page 28 in catalog no. 15 onwards for complete hose assemblies consisting of fueling nozzle, hose set and breakaway coupling.

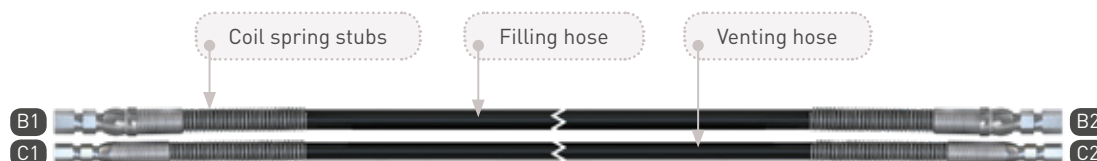
Ordering

ACCESSORIES

The following accessories are available for type TK10 CNG:

Hose sets TK10 CNG - TSA1 CNG (filling and venting hose)

Filling and venting hoses for connecting fueling nozzle and type TSA1 CNG breakaway coupling, complete with fittings and press-fittings supported by coil spring stubs.



Part No.	Filling hose B1/B2 (female thread)	Venting hose C1/C2 (female thread)	Hose length
C1-106385	UNF 7/16"-20*	UNF 7/16"-20*	3 m
C1-106386	UNF 7/16"-20*	UNF 7/16"-20*	4 m
C1-106387	UNF 7/16"-20*	UNF 7/16"-20*	5 m

* acc. to SAE J514, 37°

Hose sets TK10 CNG - TSA2 CNG (filling and venting hose)

Filling and venting hoses for connecting fueling nozzle / dispenser and type TSA2 CNG inline breakaway coupling, complete with fittings and press-fittings supported by coil spring stubs.

Part No.	Filling hose B1/B2 (female thread)	Venting hose C1/C2 (female thread)	Hose length
C1-106395	UNF 7/16"-20*	UNF 7/16"-20*	2.5 0.5 m
C1-106396	UNF 7/16"-20*	UNF 7/16"-20*	3.5 0.5 m
C1-106397	UNF 7/16"-20*	UNF 7/16"-20*	4.5 0.5 m

* acc. to SAE J514, 37°

Ordering

Filling hoses

Filling hoses for connecting fueling nozzle (without gas recirculation) and dispenser, complete with fittings and press-fittings supported by coil spring stubs.



Part No.	Filling hose B1/B2 (female thread)	Hose length
E68-1032-3000	UNF 7/16"-20*	3 m
E68-1032-4000	UNF 7/16"-20*	4 m
E68-1032-5000	UNF 7/16"-20*	5 m

* acc. to SAE J514, 37°

Fittings

Stainless steel fittings for connecting the media inlet 'B' to the filling hose or the gas recirculation inlet 'C' to the venting hose.

Part No.	Description	Connection fueling nozzle	Connection filling hose
E80-648P	Fitting	UNF 7/16"-20* female thread	UNF 9/16"-18* male thread
C1-32692	Fitting	UNF 7/16"-20* female thread	UNF 7/16"-20* male thread
C1-62138	Fitting	UNF 7/16"-20* female thread	NPT 1/4" female thread

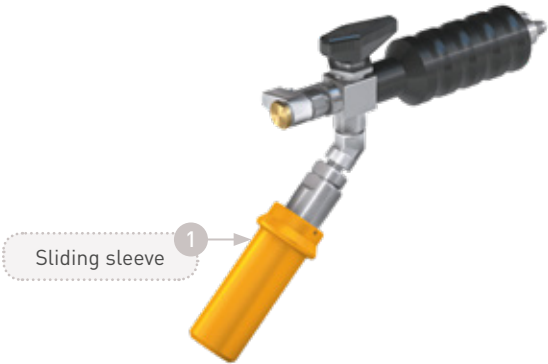
* acc. to SAE J514, 37°

Please see page 126 in catalog no. 15 onwards for a detailed overview on all available fittings.

Ordering

Spare parts

Various parts are available as spares for type TK10 CNG:



Part No.	Description
C1-127959	1 Spare parts set 3,000 psi (black sliding sleeve incl. metal sleeve and circlip)
C1-127961	1 Spare parts set 3,600 psi (yellow sliding sleeve incl. metal sleeve and circlip)
E99-44923	Maintenance spray

Other products

OTHER PRODUCTS

You will find more products in our current catalog no. 15



Further information on our homepage
www.weh.com

Abbreviations/Definition

Explanation of abbreviations see technical appendix in the catalogue or www.weh.com

Safe product selection

Our WEH® Products are designed to be operated by qualified professional users (insofar as WEH® Products are also designed to be operated by other users in individual cases, this is explicitly stated in the corresponding operating instructions). You alone are responsible for the selection of WEH® Products and their configuration according to the requirements of your system. In doing so, please particularly consider your intended use, your performance data, your material compatibility, your system concept and your system limits as well as your technical and legal requirements for operation, handling and maintenance. The quality and safety of WEH® Products is our highest priority. For this reason, WEH® Products may not be used outside the specifications in the relevant data sheets and product descriptions. We also strongly recommend that you refrain from using third-party spare parts or a combination of WEH® Products with unsuitable third-party products. You alone are responsible for reviewing the suitability of third-party products. WEH® Products and WEH® Spare parts comply with our quality and safety standards.

Explanation on the Pressure Equipment Directive

These WEH® Products are generally and exclusively classified as pressure accessories for piping in accordance with Article 2 (5) of the Pressure Equipment Directive 2014/68/EU. These WEH® Products may not be used (i) as safety accessories or (ii) for vessels as defined by the Pressure Equipment Directive 2014/68/EU. Therefore, the application of these WEH® Products must comply with their classification as pressure accessories for piping. The assessment with regard to a different classification can, however, be made on request.

External change management

WEH reserves the right to update, optimise and adjust its products continuously. This may result in corresponding changes of the product. Customers will be informed proactively or unsolicited by WEH only in individual cases about product updates, product optimisations and/or product adaptations that have been carried out. You are free to contact WEH at any time to request information about any product updates, product optimisations and/or product adjustments.

© All rights reserved, WEH GmbH. Any unauthorized use is strictly forbidden. Subject to alteration.
No liability will be assumed for any content. Herewith previous versions are no longer valid.

» Contact

For queries and further information, please do not hesitate to contact us.

Manufacturer:

WEH GmbH Gas Technology

Josef-Henle-Str. 1
89257 Illertissen / Germany

Phone: +49 7303 95190-0
Fax: +49 7303 95190-9999

Email: ngvsales@weh.com
www.weh.com



Distributor US:

WEH Technologies Inc.

24903 Laguna Edge Drive
Katy, TX 77494 / USA

Phone: +1 832 331 0021
Fax: +1 281 712 2664

Email: sales@weh.us
www.weh.us